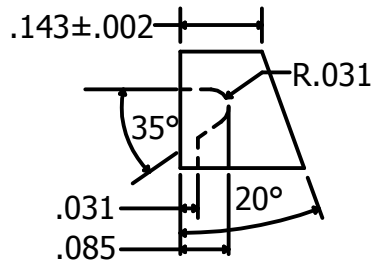
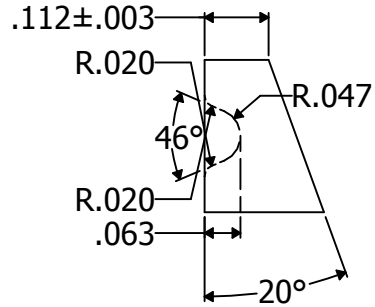


2

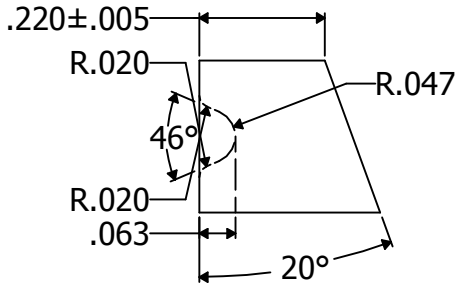
1



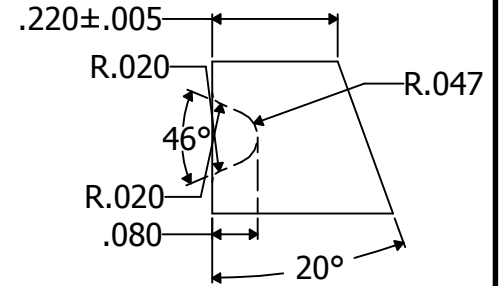
1/2 & 3/4 SIZE



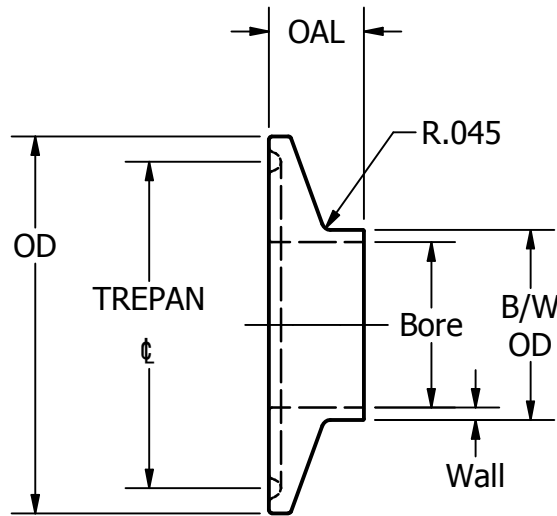
1.0 - 5.0 SIZE



6.0 SIZE



8.0-12.0 SIZE



Part Number	Size	OD	Trepan	OAL	B/W OD	Bore	Wall
AAM00500	1/2	.984	.800	1.125	.500	.370	.065
AAM00750	3/4	.984	.800	1.125	.750	.620	.065
AAM01000	1.0	1.984	1.718	1.125	1.000	.870	.065
AAM01500	1-1/2	1.984	1.718	1.125	1.500	1.370	.065
AAM02000	2.0	2.516	2.218	1.125	2.000	1.870	.065
AAM02500	2.-1/2	3.047	2.781	1.125	2.500	2.370	.065
AAM03000	3.0	3.579	3.281	1.125	3.000	2.870	.065
AAM04000	4.0	4.682	4.344	1.125	4.000	3.834	.083
AAM05120	5.0	5.687	5.292	1.500	5.000	4.782	.109
AAM06000	6.0	6.570	6.176	1.500	6.000	5.782	.109
AAM08000	8.0	8.570	8.156	1.500	8.000	7.782	.109
AAM10000	10.0	10.570	10.156	1.500	10.000	9.782	.109
AAM12000	12.0	12.570	12.156	1.500	12.000	11.782	.109

THE SKETCHES ARE FOR REFERENCE ONLY. ACTUAL SHAPE OF THE FERRULES MAY BE DIFFERENT.

<b>REVISION HISTORY</b> <table border="1"> <thead> <tr> <th>REV</th> <th>DESCRIPTION</th> <th>DATE</th> </tr> </thead> <tbody> <tr> <td>1</td> <td>Groove Dims to BPE 2012</td> <td>12/17/12</td> </tr> <tr> <td>2</td> <td>Groove Dims to BPE 2012</td> <td>5/30/13</td> </tr> <tr> <td>3</td> <td>AAM05120 OAL</td> <td>10/25/17</td> </tr> </tbody> </table>			REV	DESCRIPTION	DATE	1	Groove Dims to BPE 2012	12/17/12	2	Groove Dims to BPE 2012	5/30/13	3	AAM05120 OAL	10/25/17	<b>TOLERANCES</b> DECIMALS: .XX ±.015 .XXX ±.005 .XXXX ±.0005 ANGLES: 1°	DRAWN M Golabek 10/25/2017  ALL EDGES AND FILLETS .015 R UNLESS OTHERWISE SPECIFIED	<b>Steel &amp; O'Brien Mfg. Inc.</b>	
			REV	DESCRIPTION	DATE													
1	Groove Dims to BPE 2012	12/17/12																
2	Groove Dims to BPE 2012	5/30/13																
3	AAM05120 OAL	10/25/17																
TITLE STD T.C. BY STD B/W L14AM7 FERRULE		DWG NO: <b>AAM</b>	REV 3															
			SCALE: 1 : 1	SHEET 1 OF 1														

2

1