

2

1

2.188 ± .050

Ø.875 THRU  
8 PLCS

Ø9.500

.563

1.500

.3237 REF

R.045

6.570

6.176

5.782

11.00 ± .050

B

B



L14AM7-6  
(IF WELDED)

6.000

R.060

38W-6  
(IF WELDED)

A

A

R.060

R.060

.220 ± .005

R.020

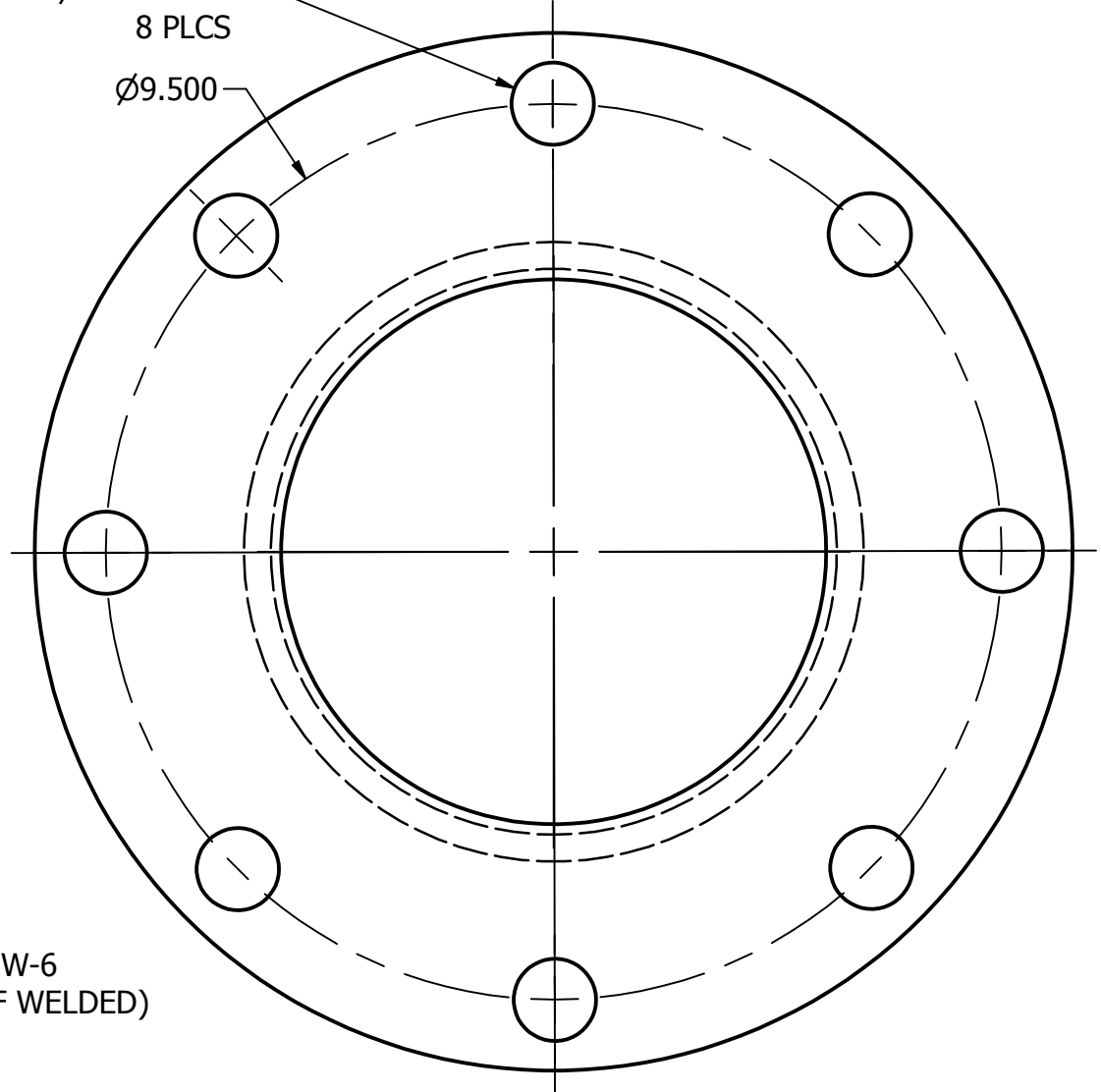
R.047

46°

R.020

.063

20°



TOLERANCES		DRAWN Engineering		<b>Steel &amp; O'Brien Mfg. Inc.</b>		
		2/7/2007				
DECIMALS: .XX ± .015 .XXX ± .005 .XXXX ± .0005 ANGLES: 1°		<ALL EDGES AND FILLETS .015 R UNLESS OTHERWISE SPECIFIED <REFER TO DOC# QS121 FOR GENERAL TOLERANCES		TITLE		
				6.000 TC X 6.000 38SL SLIP ON ADAPTER		REV
				DWG NO: <b>38MP-6</b>		
		SCALE: .5 : 1		SHEET 1 OF 1		

2

1

