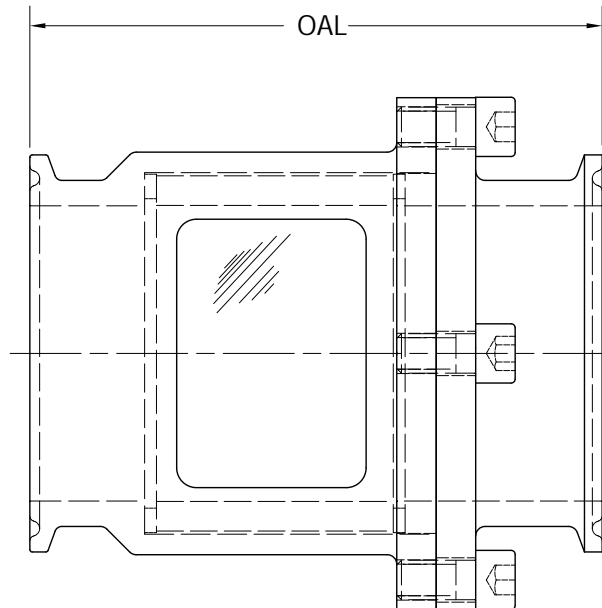


Socket Head Cap Screw Sight Glass



Member of:



PART NUMBER	Size	OAL	PYREX PSI	ACRYLIC PSI	NO. OF BOLTS	VIEWING SIZE
KDF00500	1/2"	3.000	378	1400	4	(3) .450 X .875 Ovals
KDF00750	3/4"	3.000	325	450	4	(2) .515 Holes & (2) .700 Holes
KDF01000	1"	3.625	215	439	4	(2) .750 Holes & (2) 1.187 Holes
KDF01500	1-1/2"	3.625	150	306	4	(2) .750 Holes & (2) 1.187 Holes
KDF02000	2"	3.625	130	234	4	(2) 1.20 X 1.70 Rectangles
KDF02500	2-1/2"	3.625	100	160	6	(2) 1.25 X 2.00 Rectangles
KDF03000	3"	3.625	95	234	6	(2) 1.00 X 2.50 Rectangles
KDF04000	4"	3.625	60	NA	8	(4) 1.00 X 3.00 Rectangles
KDF06000	6"	4.625	33	NA	8	(4) 1.50 X 3.00 Rectangles

Notes:

All pressure ratings are maximum, at ambient temperatures void of thermal shock.

Available with Pyrex glass or Acrylic.

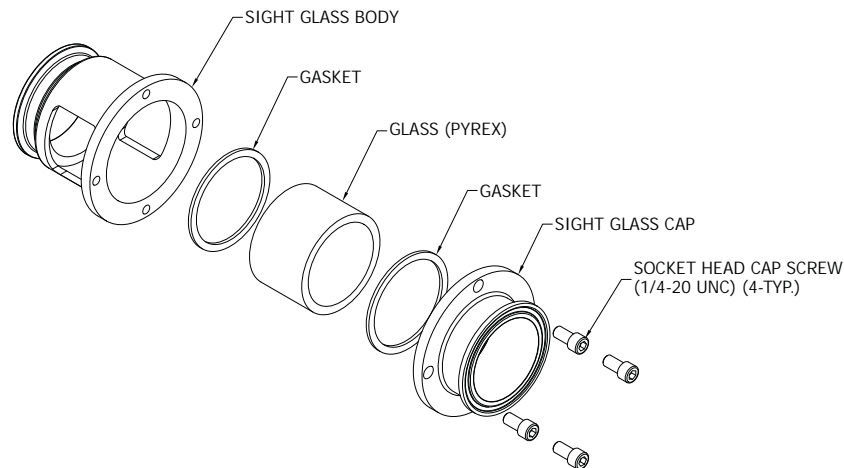
Buna-n seals are standard, available with viton or silicone seals.

Clamp connections are standard, available with bevel seat, butt weld, I-line, Q-line and other various configurations.

Socket Head Cap Screw Sight Glass



Member of:



Assembly Instructions

- 1) Stand sight glass body up on ferrule face. Drop first gasket into sight glass body. Adjust gasket so it is flat on the bottom of the sight glass body.
- 2) Slide glass into the sight glass body. Make sure first gasket is centered with glass.
- 3) Place second gasket on top of glass. Center gasket with i.d./o.d. of glass.
- 4) Set the sight glass cap on top of the second gasket.
- 5) Hand tighten the socket head cap screws thru the sight glass cap, threading into the sight glass body. Inspect the gaskets, making sure they are aligned with the glass. Use an allen wrench (.188) to tighten down the socket head cap screws. Alternate tightening the screws (1,3,2,4) to insure a flat tightening of the cap.
- 6) Once installed check for leaks.
- 7) If leaks occur, remove the sight glass from the line. Reverse steps 5-1. Inspect the gaskets and gasket alignment. Reassemble