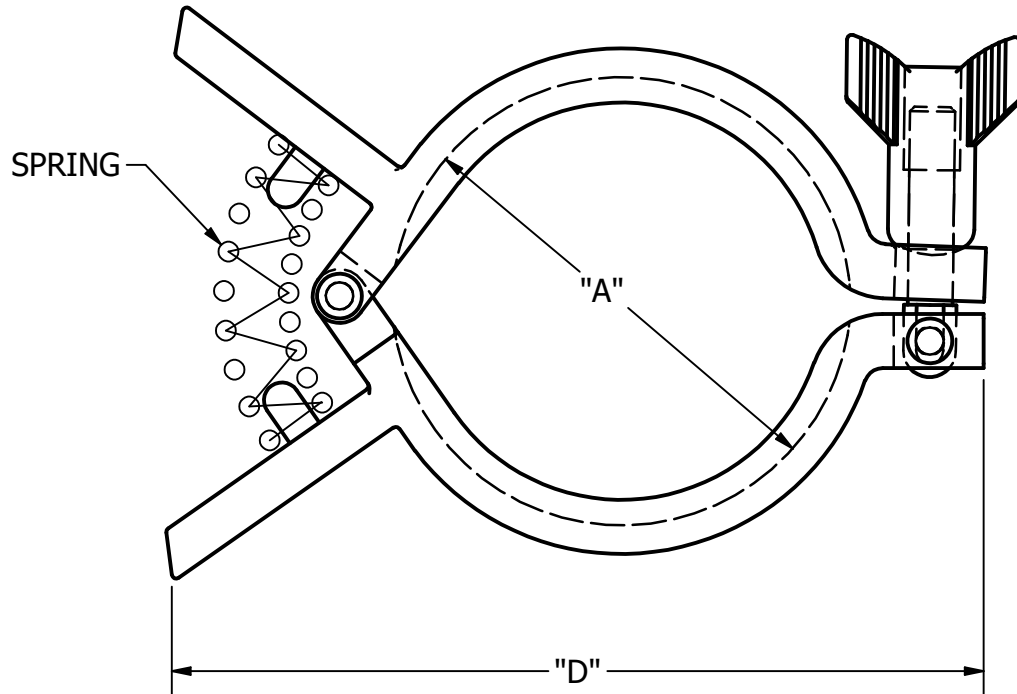
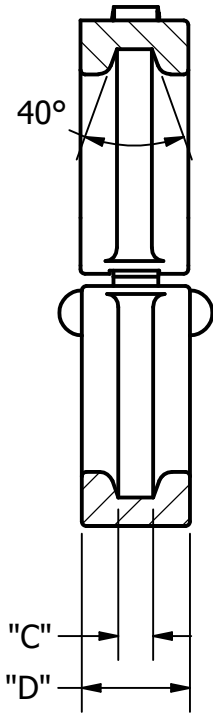


13MHHM-Q - Single Pin Squeeze Clamp

Part Number	Size	"A"	"B" (Ref.)	"C"	"D" (Ref.)
13MHHMQ-.50	1/2" - 3/4"	1.125	.750	.242	3.63
13MHHMQ-1	1" - 1 1/2"	2.122	.750	.242	4.63
13MHHMQ-2	2"	2.654	.750	.242	5.00
13MHHMQ-2.5	2 1/2"	3.185	.750	.242	6.00
13MHHMQ-3	3"	3.717	.750	.242	7.00
13MHHMQ-4	4"	4.820	.750	.242	8.00

ALL DIMENSIONS IN INCHES



TOLERANCES DECIMALS: .XX ±.125 .XXX ±.050 ANGLES: 1°	DRAWN R Canell 5/23/2014	Steel & O'Brien Mfg. Inc.		
	UNLESS OTHERWISE NOTED: >ALL WELDS ARE AUTOGENOUS BUTTWELD >WELDS POLISHED FLUSH >32Ra ID/OD >REFER TO DOC# QS121 FOR GENERAL TOLERANCES	TITLE 13MHHM - SINGLE PIN SQUEEZE CLAMP		REV
		DWG NO: 13MHHMQ		
		SCALE: N/A	SHEET 1 OF 1	