

FLANGE  $\pm.008$

OD  $\pm.050$

R.060 (MAX.)

R.06

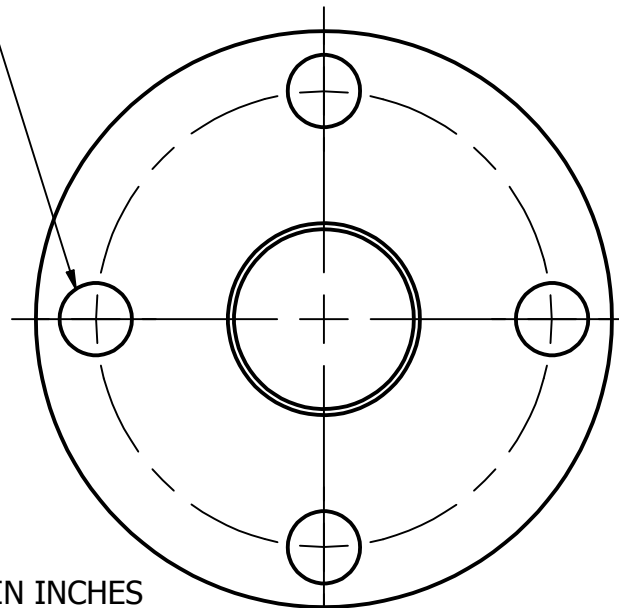
R.06

HOLE DIA  $\pm.008$  THRU  
# HOLES PLACES  
ON B.C.  $\pm.008$  BOLT CIRCLE

$.125 \pm.008$

ID  $\pm.008$

BW OD  $\pm.008$



ALL DIMENSIONS ARE IN INCHES

38W WELD NECK FLANGE

Part #	OD	BW OD	ID	FLANGE	Hole Dia	# Holes	B.C.
DAS00500	3.500 in	.500 in	.370 in	.375 in	.625 in	4	2.375 in
DAS00750	3.875 in	.750 in	.620 in	.375 in	.625 in	4	2.750 in
DAS01000	4.250 in	1.000 in	.870 in	.375 in	.625 in	4	3.125 in
DAS01500	5.000 in	1.500 in	1.370 in	.375 in	.625 in	4	3.875 in
DAS02000	6.000 in	2.000 in	1.870 in	.438 in	.750 in	4	4.750 in
DAS02500	7.000 in	2.500 in	2.370 in	.438 in	.750 in	4	5.500 in
DAS03000	7.500 in	3.000 in	2.870 in	.500 in	.750 in	4	6.000 in
DAS04000	9.000 in	4.000 in	3.834 in	.500 in	.750 in	8	7.500 in
DAS06000	11.000 in	6.000 in	5.782 in	.563 in	.875 in	8	9.500 in
DAS08000	13.500 in	8.000 in	7.782 in	.563 in	.875 in	8	11.750 in
DAS10000	16.000 in	10.000 in	9.782 in	.688 in	1.000 in	12	14.250 in
DAS12000	19.000 in	12.000 in	11.782 in	.750 in	1.000 in	12	17.000 in

POLISH CODE DEFINITION

- #1 - UNPOLISHED I.D. / UNPOLISHED O.D.
- #3 - POLISHED I.D. (32 Ra) / UNPOLISHED O.D.
- #5 - UNPOLISHED I.D. / POLISHED O.D. (32 Ra)
- #7 - POLISHED I.D. (32 Ra) / POLISHED O.D. (32 Ra)

TOLERANCES

DECIMALS:  
.XX  $\pm.015$   
.XXX  $\pm.005$   
.XXXX  $\pm.0005$   
ANGLES:  $1^\circ$

DRAWN  
M. Golabek  
2/29/2012

ALL EDGES AND  
FILLETS .015 R  
UNLESS OTHERWISE  
SPECIFIED

**Steel & O'Brien Mfg. Inc.**

TITLE  
38W WELD NECK FLANGE

DWG NO: **DAS**

SCALE: 1 : 1

REV

SHEET 1 OF 1