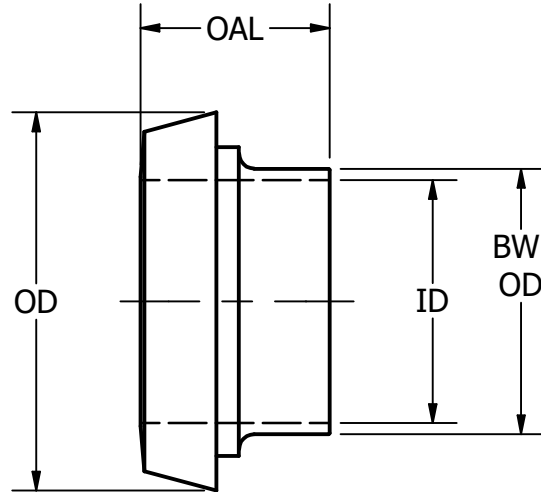


| PART # | SIZE | OD | ID | BW OD | OAL |
|---------------|-------|-------|-------|-------|-------|
| DN14SDM-DN10 | DN10 | .886 | .398 | .516 | .669 |
| DN14SDM-DN15 | DN15 | 1.122 | .634 | .752 | .669 |
| DN14SDM-DN20 | DN20 | 1.437 | .791 | .909 | .709 |
| DN14SDM-DN25 | DN25 | 1.732 | 1.028 | 1.146 | .866 |
| DN14SDM-DN32 | DN32 | 1.969 | 1.264 | 1.382 | .984 |
| DN14SDM-DN40 | DN40 | 2.205 | 1.500 | 1.618 | 1.024 |
| DN14SDM-DN50 | DN50 | 2.697 | 1.972 | 2.091 | 1.102 |
| DN14SDM-DN65 | DN65 | 3.386 | 2.602 | 2.760 | 1.260 |
| DN14SDM-DN80 | DN80 | 3.937 | 3.193 | 3.350 | 1.457 |
| DN14SDM-DN100 | DN100 | 4.764 | 3.941 | 4.098 | 1.732 |
| DN14SDM-DN125 | DN125 | 5.906 | 4.925 | 5.083 | 1.339 |
| DN14SDM-DN150 | DN150 | 6.929 | 5.909 | 6.067 | 1.457 |



| | | |
|--|--------------------------------------|--------------|
| TOLERANCES REFER TO STEEL & O'BRIEN DOCUMENT # QS121 | Steel & O'Brien Mfg. Inc. | |
| | TITLE DIN 11851 TYPE SD LINER | |
| | DWG NO: DN14SDM | REV |
| | SCALE: 1 : 1 | SHEET 1 OF 1 |

| PART # | SIZE | OD | ID | BW OD | OAL |
|---------------|-------|-------|-------|-------|-------|
| DN14SDM-DN10 | DN10 | .886 | .398 | .516 | .669 |
| DN14SDM-DN15 | DN15 | 1.122 | .634 | .752 | .669 |
| DN14SDM-DN20 | DN20 | 1.437 | .791 | .909 | .709 |
| DN14SDM-DN25 | DN25 | 1.732 | 1.028 | 1.146 | .866 |
| DN14SDM-DN32 | DN32 | 1.969 | 1.264 | 1.382 | .984 |
| DN14SDM-DN40 | DN40 | 2.205 | 1.500 | 1.618 | 1.024 |
| DN14SDM-DN50 | DN50 | 2.697 | 1.972 | 2.091 | 1.102 |
| DN14SDM-DN65 | DN65 | 3.386 | 2.602 | 2.760 | 1.260 |
| DN14SDM-DN80 | DN80 | 3.937 | 3.193 | 3.350 | 1.457 |
| DN14SDM-DN100 | DN100 | 4.764 | 3.941 | 4.098 | 1.732 |
| DN14SDM-DN125 | DN125 | 5.906 | 4.925 | 5.083 | 1.339 |
| DN14SDM-DN150 | DN150 | 6.929 | 5.909 | 6.067 | 1.457 |