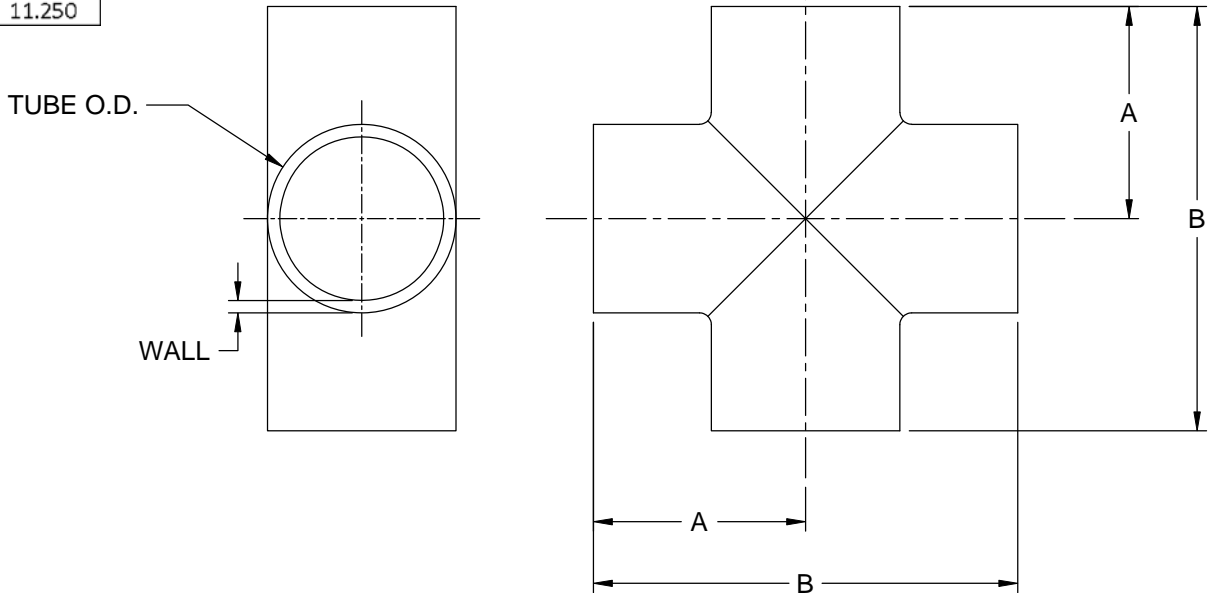


| PART NO. | OD SIZE | WALL | A | B |
|-----------|-----------------|-------|-------|--------|
| 9WWWW-.50 | .50" (12.70mm) | 0.065 | 0.750 | 1.500 |
| 9WWWW-.75 | .75" (19.05mm) | 0.065 | 1.125 | 2.250 |
| 9WWWW-1 | 1.0" (25.40mm) | 0.065 | 1.125 | 2.250 |
| 9WWWW-15 | 1.5" (38.10mm) | 0.065 | 1.656 | 3.312 |
| 9WWWW-2 | 2.0" (50.80mm) | 0.065 | 2.063 | 4.125 |
| 9WWWW-25 | 2.5" (63.50mm) | 0.065 | 2.343 | 4.688 |
| 9WWWW-3 | 3.0" (76.20mm) | 0.065 | 2.594 | 5.188 |
| 9WWWW-4 | 4.0" (101.60mm) | 0.083 | 3.438 | 6.875 |
| 9WWWW-6 | 6.0" (152.40mm) | 0.109 | 5.625 | 11.250 |

| REVISIONS | | | |
|-----------|-----------------------------|------------|------------|
| REV | DESCRIPTION | DATE | APPROVED |
| - | ORIGINAL PRODUCTION RELEASE | 12/14/2010 | M. GOLABEK |

NOTES:
1. PARTS TO CONFORM TO S&O QUALITY STANDARDS QS120 & QS125



9WWWW-XX-X-XXX

| | | |
|-----------------|------------------------------|---------------------------|
| TUBE O.D. SIZE: | FINISH: | MATERIAL: |
| .50 = 1/2" | -1 MILL FINISH | 304 - 304 STAINLESS STEEL |
| .75 = 3/4" | -3 POLISH ID, MILL FINISH OD | 316 - 316 STAINLESS STEEL |
| 1 = 1" | -5 MILL FINISH ID, POLISH OD | |
| 15 = 1-1/2" | -7 POLISH ID & OD | |
| 2 = 2" | | |
| 25 = 2-1/2" | | |
| 3 = 3" | | |
| 4 = 4" | | |
| 6 = 6" | | |

DETAIL A: PART NUMBERING FORMAT

| | | | | | |
|----------------|--|--|--------------------|--|-------------------|
| MATL. | | THE INFORMATION CONTAINED IN THIS DRAWING IS PROPRIETARY AND SHALL NOT BE USED OR DISCLOSED WITHOUT THE PRIOR WRITTEN PERMISSION OF STEEL & O'BRIEN MANUFACTURING INC. | | 7197 Route 98 Arcade, NY 14009 Tel: 585-492-5800 Fax: 585-492-5812 www.steelobrien.com | |
| FINISH | UNLESS OTHERWISE NOTED: DO NOT SCALE DRAWING ALL DIMENSIONS ARE GIVEN IN INCHES [MM] BREAK ALL SHARP EDGES R.015 MAX. | DWN BY J. STEEL | DATE 12/14/2009 | DWG. TITLE 9WWWWW - BUTT WELD CROSS, SHORT | |
| CUST. NO. | TOLERANCES: .X - ±.030 .XX - ±.015 .XXX - ±.005 .XXXX - ±.0005 ANGLES: ±.5° | CHK BY J. WQJCIK | DATE 12/14/2009 | SIZE B | REV - |
| QUOTE/P.O. NO. | THIS DRAWING CONFORMS TO ANSI Y14.5M DRAWING STANDARD | APPD BY M. GOLABEK | DATE 12/14/2009 | PART NO. SEE DET. A | DWG NO. 9WWWWW |
| SCALE: NONE | | | | SHEET 1 OF 1 | |