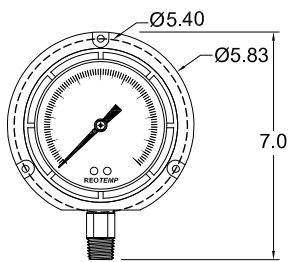


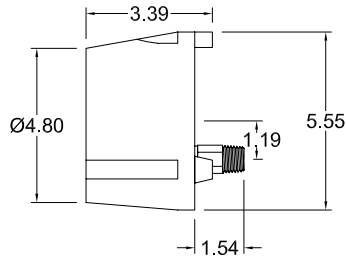


PT45P



PT45P/PT45A

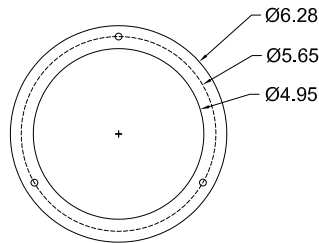
*dimensions in inches



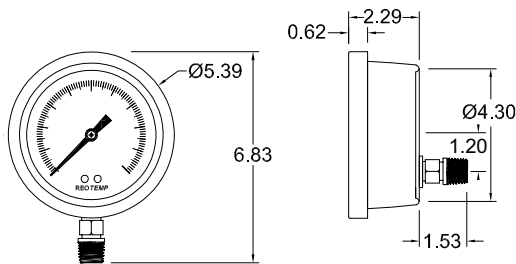
PT45P



PT45T



PT45T Mounting Flange



PT45T

*dimensions in inches

 Fillable

 Dials

 Accuracy
±.5%

 **DampX™**
Dampened
Movement

 Diaphragm Seal
Compatible

FEATURES / BENEFITS

- Safety Pattern Design
- Solid Front/Blowout Back Safety Case
- All Stainless Steel Internal Parts
- Internal Overload and Underload Stops
- Field Fillable Case
- Micro-Adjustable Pointer with Floating Zero



SPECIFICATIONS

Accuracy ±0.5%, Grade 2A (10k - 20k psi = 1% upscale, 2% downscale)

Ambient Limits -40°F/150°F

Process Limits -40°F/250°F

Process Limits with Diaphragm Seal -60°F/400°F (Direct Mount)*
-110°F/750°F (Remote Mount or Cooling Tower)*
*Exact limits depend on diaphragm seal and fill fluids.

Wetted Materials Tube: 316SS Seamless
Socket: 316SS

Lens Tempered Safety Glass (Standard),
Plastic or Laminated Safety Glass

Other Materials Case: Reinforced Phenolic,
Thermoplastic, or 316SS
Ring: Phenolic Turret Twist-Off or SS
Twist-Off Bayonet
Dial: White Aluminum, Black Letters,
Case-to-Socket: O-Ring

Fillable Yes

Restrictor Screw Yes, removable.

Maximum Working Pressure Stable = 100%
Momentary = 130% of scale

Environmental Protection NEMA 4X/IP65

Weight Phenolic (Dry) = 2.5 lbs
Phenolic (Filled) = 3.5 lbs
Thermoplastic (Dry) = 1.9 lbs
Thermoplastic (Filled) = 2.9 lbs
SS (Dry) = 2 lbs
SS (Filled) = 3 lbs