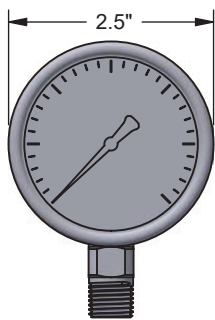
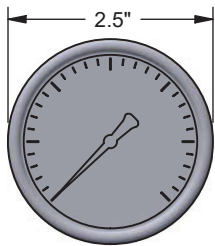
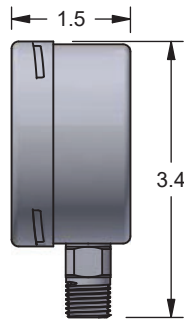




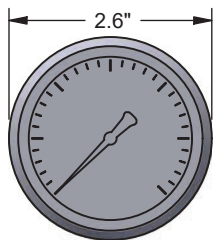
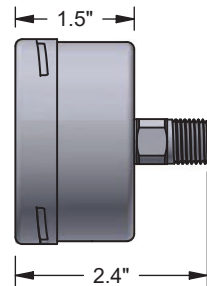
PC25S1



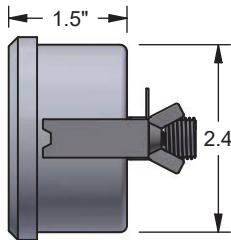
Bottom



Back Connect



U-Clamp



Dials



Custom Logo



Diaphragm Seal
Compatible

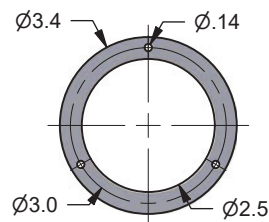
FEATURES / BENEFITS

- Sensitive Diaphragm/Capsule Mechanism
- All-Welded 316 Stainless Steel Capsule and Socket
- Easy-Access Zero Reset Screw on Dial



SPECIFICATIONS

Accuracy	±1.6%
Ambient Limits	-40°F/150°F
Process Limits	-40°F/200°F
Process Limits with Diaphragm Seal	-60°F/350°F (Direct Mount)* -110°F/750°F (Remote Mount or Cooling Tower)* *Exact limits depend on diaphragm seal and fill fluids.
Wetted Materials	Capsule: 316L Socket: 316L
Lens	Laminated Safety Glass (Standard) or Plastic
Other Materials	Case: 304SS Ring: 304SS, Bayonet Twist-Off Dial: White Aluminum, Black Letters Case-to-Socket: FPM O-Ring, Vented Case
Fillable	Yes, ≥ 40 in H ₂ O Range Span
Restrictor Screw	Yes
Maximum Working Pressure	Stable = 100% Momentary = 130% of scale
Weight	2.5" = 0.4 lbs, Filled 0.7lbs



Mounting Flange
Bayonet Case