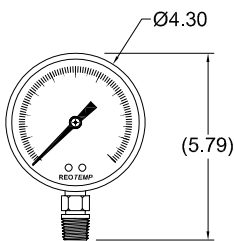




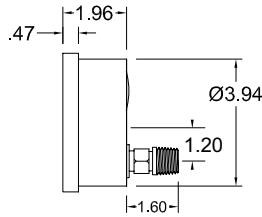
PR40



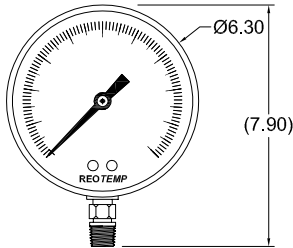
PR60



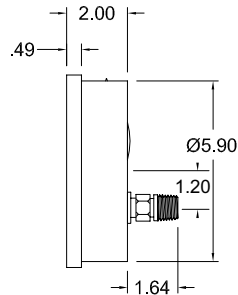
PR40



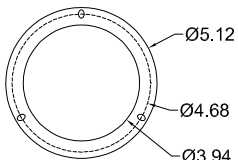
*dimensions in inches



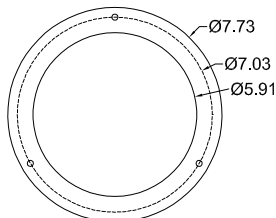
PR60



*dimensions in inches



PR40 Mounting Flange



PR60 Mounting Flange



Fillable



Dials



Accuracy



Custom Logo



Diaphragm Seal
Compatible

FEATURES / BENEFITS

- All-Welded Stainless Steel Construction
- Removable Bayonet Ring, Micro Adjustable Pointer
- Field Fillable Case, NEMA 4X/IP65
- Internal Overload and Underload Stops, Floating Zero
- Safety Blow-Out Relief



SPECIFICATIONS

Accuracy	1%, ASME Grade 1A (10K to 20K ; 2% Upscale, 4% Downscale)
Ambient Limits	-40°F/150°F
Process Limits	-40°F/250°F
Process Limits with Diaphragm Seal	-60°F/400°F (Direct Mount)* -110°F/750°F (Remote Mount or Cooling Tower)* *Exact limits depend on diaphragm seal and fill fluids.
Wetted Materials	Tube: 316SS Seamless Socket: 316SS
Lens	Tempered Safety Glass , Plastic or Laminated Safety Glass
Other Materials	Case: 304SS Ring: 304SS Twist-Off Bayonet Dial: White Aluminum with Black Letters Case-Socket: Welded
Fillable	Yes
Restrictor Screw	Yes, removable.
Maximum Working Pressure	Stable = 100% Momentary = 130% of scale
Environmental Protection	NEMA 4X/IP65
Weight	4" = 1.3 lbs (2.0 lbs filled), 6" = 2.1 lbs (4.2 lbs filled)