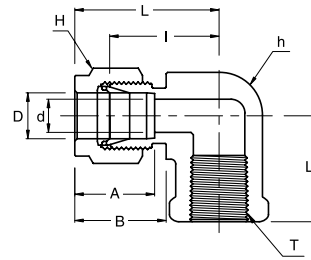


SFE
Female Elbow



Connects Fractional Tubes To Male NPT Thread

Part No.	Tube OD D (inch)	T* (NPT)	d Min	Width Across Flat		A	B	I	L	L1
				h (inch)	H (inch)					
SFE - 2 - 2N	1/8	1/8	2.28	1/2	7/16	12.70	15.24	18.03	24.63	23.40
SFE - 2 - 4N	1/8	1/4	2.28	11/16	7/16	12.70	15.24	20.82	27.43	29.00
SFE - 3 - 2N	3/16	1/8	3.04	1/2	1/2	13.71	16.00	18.79	25.40	23.40
SFE - 4 - 2N	1/4	1/8	4.82	1/2	9/16	15.24	17.78	19.55	26.92	23.40
SFE - 4 - 4N	1/4	1/4	4.82	11/16	9/16	15.24	17.78	22.35	29.71	29.00
SFE - 4 - 6N	1/4	3/8	4.82	13/16	9/16	15.24	17.78	24.38	31.75	22.35
SFE - 4 - 8N	1/4	1/2	4.82	1	9/16	15.24	17.78	27.17	34.54	37.00
SFE - 5 - 2N	5/16	1/8	6.35	9/16	5/8	16.25	18.54	21.33	28.70	19.05
SFE - 5 - 4N	5/16	1/4	6.35	11/16	5/8	16.25	18.54	23.11	30.48	29.00
SFE - 6 - 2N	3/8	1/8	7.11	5/8	11/16	16.76	19.30	23.11	30.48	19.05
SFE - 6 - 4N	3/8	1/4	7.11	11/16	11/16	16.76	19.30	23.87	31.24	29.00
SFE - 6 - 6N	3/8	3/8	7.11	13/16	11/16	16.76	19.30	25.90	33.27	22.35
SFE - 6 - 8N	3/8	1/2	7.11	1	11/16	16.76	19.30	28.70	36.06	37.00
SFE - 8 - 4N	1/2	1/4	10.41	13/16	7/8	22.86	21.84	25.90	36.06	22.35
SFE - 8 - 6N	1/2	3/8	10.41	13/16	7/8	22.86	21.84	25.90	36.06	22.35
SFE - 8 - 8N	1/2	1/2	10.41	1	7/8	22.86	21.84	28.70	38.86	37.00
SFE - 10 - 6N	5/8	3/8	12.70	15/16	1	24.38	21.84	27.94	38.10	22.35
SFE - 10 - 8N	5/8	1/2	12.70	1-1/16	1	24.38	21.84	29.71	39.87	28.44
SFE - 12 - 8N	3/4	1/2	15.74	1-1/16	1-1/8	24.38	21.84	29.71	39.87	28.44
SFE - 12 - 12N	3/4	3/4	15.74	1-3/8	1-1/8	24.38	21.84	34.54	44.70	31.75
SFE - 14 - 12N	7/8	3/4	18.28	1-3/8	1-1/4	25.90	21.84	34.54	44.70	31.75
SFE - 16 - 12N	1	3/4	22.35	1-3/8	1-1/2	31.24	26.41	36.83	49.02	31.75
SFE - 16 - 16N	1	1	22.35	1-11/16	1-1/2	31.24	26.41	41.40	53.59	38.10

Connects Metric Tubes To Male NPT Thread

Part No.	Tube OD D	T* (NPT)	d Min	Width Across Flat		A	B	I	L	L1
				h	H					
SFE - 6M - 4N	6	1/4	4.8	17.46	14	15.3	17.7	22.4	29.8	22.40
SFE - 6M - 6N	6	3/8	4.8	20.63	14	15.3	17.7	24.4	31.7	22.40
SFE - 6M - 8N	6	1/2	4.8	25.40	14	15.3	17.7	27.2	34.6	37.00
SFE - 8M - 4N	8	1/4	6.4	17.46	16	16.2	18.6	23.1	30.6	29.00
SFE - 8M - 8N	8	1/2	6.4	25.40	16	16.2	18.6	28.0	35.2	37.00
SFE - 10M - 4N	10	1/4	7.9	17.46	19	17.2	19.5	25.9	33.5	29.00
SFE - 10M - 6N	10	3/8	7.9	20.63	19	17.2	19.5	25.9	33.5	22.40
SFE - 10M - 8N	10	1/2	7.9	25.40	19	17.2	19.5	28.7	36.1	37.00
SFE - 12M - 6N	12	3/8	9.5	20.63	22	22.8	22.0	25.9	36.2	22.35
SFE - 12M - 8N	12	1/2	9.5	25.40	22	22.8	22.0	28.7	38.8	37.00

- Dimensions and Drawings are for reference only and are subject to change without prior notice.
 - Unless otherwise specified, all dimensions are in millimeters.
 - Sizes, pressure classes, and end connections not listed are available upon request.
 - Dimensions shown with SUPERLOK nuts finger-tight, where applicable.