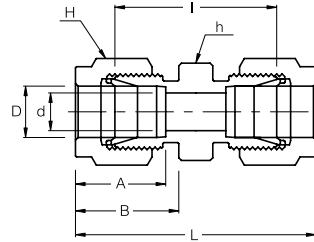
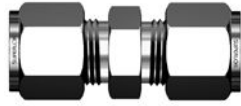


SU Union



Connects Fractional Tubes

Part No.	Tube OD D (inch)	d Min	Width Across Flat		A	B	I	L
			h (inch)	H (inch)				
SU - 1	1/16	1.27	5/16	5/16	8.63	10.92	17.52	25.15
SU - 2	1/8	2.28	7/16	7/16	12.70	15.24	22.35	35.56
SU - 3	3/16	3.04	7/16	1/2	13.71	16.00	24.13	37.33
SU - 4	1/4	4.82	1/2	9/16	15.24	17.78	26.16	40.89
SU - 5	5/16	6.35	9/16	5/8	16.25	18.54	28.19	42.92
SU - 6	3/8	7.11	5/8	11/16	16.76	19.30	30.22	44.95
SU - 8	1/2	10.41	13/16	7/8	22.86	21.84	30.98	51.30
SU - 10	5/8	12.70	15/16	1	24.38	21.84	31.75	52.07
SU - 12	3/4	15.74	1-1/16	1-1/8	24.38	21.84	33.27	53.59
SU - 14	7/8	18.28	1-3/16	1-1/4	25.90	21.84	34.79	55.11
SU - 16	1	22.35	1-3/8	1-1/2	31.24	26.41	40.38	64.77
SU - 20	1-1/4	27.69	1-3/4	1-7/8	41.15	38.86	48.00	92.20
SU - 24	1-1/2	34.04	2-1/8	2-1/4	50.04	45.21	53.59	107.95
SU - 32	2	45.97	2-3/4	3	67.56	62.74	74.68	149.35

Connects Metric Tubes

Part No.	Tube OD D	d Min	Width Across Flat		A	B	I	L
			h	H				
SU - 2M	2	1.7	12	12	12.9	15.3	22.4	35.6
SU - 3M	3	2.4	12	12	12.9	15.3	22.1	35.3
SU - 4M	4	2.4	12	12	13.7	16.1	24.1	37.3
SU - 6M	6	4.8	14	14	15.3	17.7	26.2	41.0
SU - 8M	8	6.4	15	16	16.2	18.6	28.2	43.2
SU - 10M	10	7.9	18	19	17.2	19.5	31.0	46.2
SU - 12M	12	9.5	22	22	22.8	22.0	31.0	51.2
SU - 15M	15	11.9	24	25	24.4	22.0	31.8	52.0
SU - 16M	16	12.7	24	25	24.4	22.0	31.8	52.0
SU - 18M	18	15.1	27	30	24.4	22.0	33.3	53.5
SU - 20M	20	15.9	30	32	26.0	22.0	34.8	55.0
SU - 22M	22	18.3	30	32	26.0	22.0	34.8	55.0
SU - 25M	25	21.8	35	38	31.3	26.5	40.4	65.0

- Dimensions and Drawings are for reference only and are subject to change without prior notice.
 - Unless otherwise specified, all dimensions are in millimeters.
 - Sizes, pressure classes, and end connections not listed are available upon request.
 - Dimensions shown with SUPERLOK nuts finger-tight, where applicable.