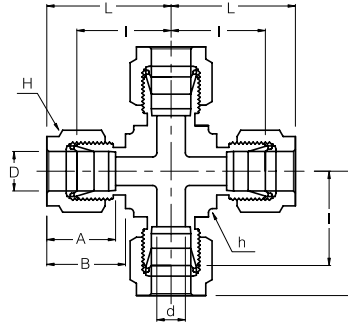


SUC

Union Cross



Connects Fractional Tubes

Part No.	Tube OD D (inch)	d Min	Width Across Flat		A	B	I	L
			h (inch)	H (inch)				
SUC - 1	1/16	1.27	3/8	5/16	8.63	10.92	14.00	18.03
SUC - 2	1/8	2.28	3/8	7/16	12.70	15.24	15.74	22.35
SUC - 3	3/16	3.04	1/2	1/2	13.71	16.00	18.54	25.14
SUC - 4	1/4	4.82	1/2	9/16	15.24	17.78	19.55	26.92
SUC - 5	5/16	6.35	5/8	5/8	16.25	18.54	22.35	29.71
SUC - 6	3/8	7.11	5/8	11/16	16.76	19.30	23.11	30.48
SUC - 8	1/2	10.41	13/16	7/8	22.86	21.84	25.90	36.06
SUC - 10	5/8	12.70	15/16	1	24.38	21.84	28.70	38.80
SUC - 12	3/4	15.74	1	1-1/8	24.38	21.84	29.71	39.87
SUC - 14	7/8	18.28	1-3/8	1-1/4	25.90	21.84	34.54	44.70
SUC - 16	1	22.35	1-3/8	1-1/2	31.24	26.41	36.83	49.02

Connects Metric Tubes

Part No.	Tube OD D	d Min	Width Across Flat		A	B	I	L
			h	H				
SUC - 3M	3	2.4	9.5	12	12.9	15.3	15.7	22.3
SUC - 6M	6	4.8	12.7	14	15.3	17.7	19.6	27.0
SUC - 8M	8	6.4	15.9	16	16.2	18.6	22.4	29.9
SUC - 10M	10	7.9	20.6	19	17.2	19.5	25.9	33.5
SUC - 12M	12	9.5	20.6	22	22.8	22.0	25.9	36.0
SUC - 16M	16	12.7	23.8	25	24.4	22.0	26.9	37.0
SUC - 18M	18	15.1	25.4	30	24.4	22.0	28.2	38.3
SUC - 20M	20	15.9	34.9	32	26.0	22.0	34.5	44.6
SUC - 25M	25	21.8	34.9	38	31.3	26.5	36.8	49.1

- Dimensions and Drawings are for reference only and are subject to change without prior notice.
 - Unless otherwise specified, all dimensions are in millimeters.
 - Sizes, pressure classes, and end connections not listed are available upon request.
 - Dimensions shown with SUPERLOK nuts finger-tight, where applicable.