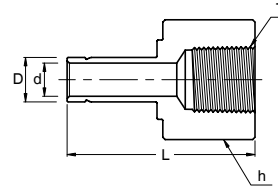


SFA

Female Adapter



Connects Fractional SUPERLOK® Port To Male NPT Thread

Part No.	Tube OD D (inch)	T* (NPT)	d (Min)	Width Across Flat h (inch)	L
SFA - 2 - 2N	1/8	1/8	2.10	9/16	31.50
SFA - 2 - 4N	1/8	1/4	2.10	3/4	35.30
SFA - 3 - 2N	3/16	1/8	3.04	9/16	32.00
SFA - 3 - 4N	3/16	1/4	3.04	3/4	35.81
SFA - 4 - 2N	1/4	1/8	4.40	9/16	33.02
SFA - 4 - 4N	1/4	1/4	4.40	3/4	37.10
SFA - 4 - 6N	1/4	3/8	4.40	7/8	39.37
SFA - 4 - 8N	1/4	1/2	4.40	1-1/16	45.50
SFA - 5 - 2N	5/16	1/8	5.60	9/16	34.29
SFA - 5 - 4N	5/16	1/4	5.60	3/4	37.59
SFA - 6 - 2N	3/8	1/8	6.90	9/16	34.29
SFA - 6 - 4N	3/8	1/4	6.90	3/4	38.10
SFA - 6 - 6N	3/8	3/8	6.90	7/8	40.38
SFA - 6 - 8N	3/8	1/2	6.90	1-1/16	46.73
SFA - 8 - 4N	1/2	1/4	9.40	3/4	43.43
SFA - 8 - 6N	1/2	3/8	9.40	7/8	45.46
SFA - 8 - 8N	1/2	1/2	9.40	1-1/16	51.80
SFA - 10 - 6N	5/8	3/8	12.00	7/8	48.26
SFA - 10 - 8N	5/8	1/2	12.00	1-1/16	53.08
SFA - 12 - 8N	3/4	1/2	14.80	1-1/16	52.83
SFA - 12 - 12N	3/4	3/4	14.80	1-5/16	54.86
SFA - 12 - 16N	3/4	1	14.80	1-5/8	58.42
SFA - 14 - 12N	7/8	3/4	17.27	1-5/16	57.15
SFA - 16 - 12N	1	3/4	20.40	1-5/16	60.70
SFA - 16 - 16N	1	1	20.40	1-5/8	64.26

Connects Metric SUPERLOK® Port To Male NPT Thread

Part No.	Tube OD D (inch)	T* (NPT)	d (Min)	Width Across Flat h (inch)	L
SFA - 3M - 2N	3	1/8	1.8	14	31.2
SFA - 6M - 2N	6	1/8	4.1	14	32.5
SFA - 6M - 4N	6	1/4	4.1	19	37.1
SFA - 8M - 4N	8	1/4	5.6	19	37.6
SFA - 10M - 4N	10	1/4	7.1	19	38.1
SFA - 10M - 6N	10	3/8	7.1	22	40.1
SFA - 10M - 8N	10	1/2	7.1	27	46.5
SFA - 12M - 4N	12	1/4	8.8	19	43.7
SFA - 12M - 6N	12	3/8	8.8	22	46.0
SFA - 12M - 8N	12	1/2	8.8	27	52.3
SFA - 18M - 12N	18	3/4	13.9	32	54.8

- Dimensions and Drawings are for reference only and are subject to change without prior notice.
- Unless otherwise specified, all dimensions are in millimeters.
- Sizes, pressure classes, and end connections not listed are available upon request.
- Dimensions shown with SUPERLOK nuts finger-tight, where applicable.