

2

1



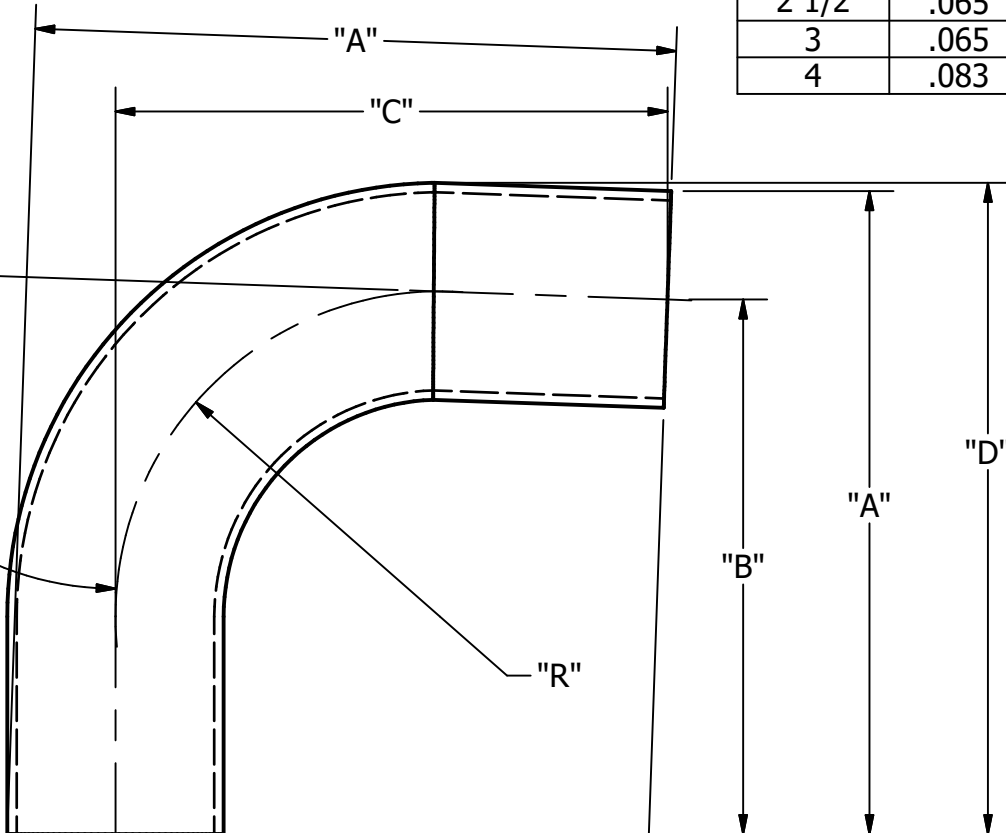
"SIZE"	"WALL"	"A"	"B"	"C"	"D"	"R"
1/2	.065	3.184	2.934	3.038	3.249	1.125
3/4	.065	3.309	2.934	3.038	3.375	1.125
1	.065	3.446	2.947	3.051	3.499	1.500
1 1/2	.065	4.446	3.696	3.828	4.500	2.250
2	.065	5.688	4.687	4.855	5.754	3.000
2 1/2	.065	6.686	5.437	5.625	6.753	3.750
3	.065	7.685	6.186	6.405	7.750	4.500
4	.083	9.929	7.930	8.212	10.011	6.000

B

B



92°±1°



A

A

ALL DIMENSIONS ARE IN INCHES

TOLERANCES & MATERIAL

Steel & O'Brien Mfg. Inc.

REFER TO
LATEST ASME-BPE
PUBLICATION

TITLE
EXTENDED TANGENT 92 DEG. ELBOW

REVISION HISTORY		
REV	DESCRIPTION	DATE
1	Tolerance on Angle Was +/- .5	10/23/21

DWG NO: S2S92	REV 1
SCALE: NTS	SHEET 1 OF 1

2



1