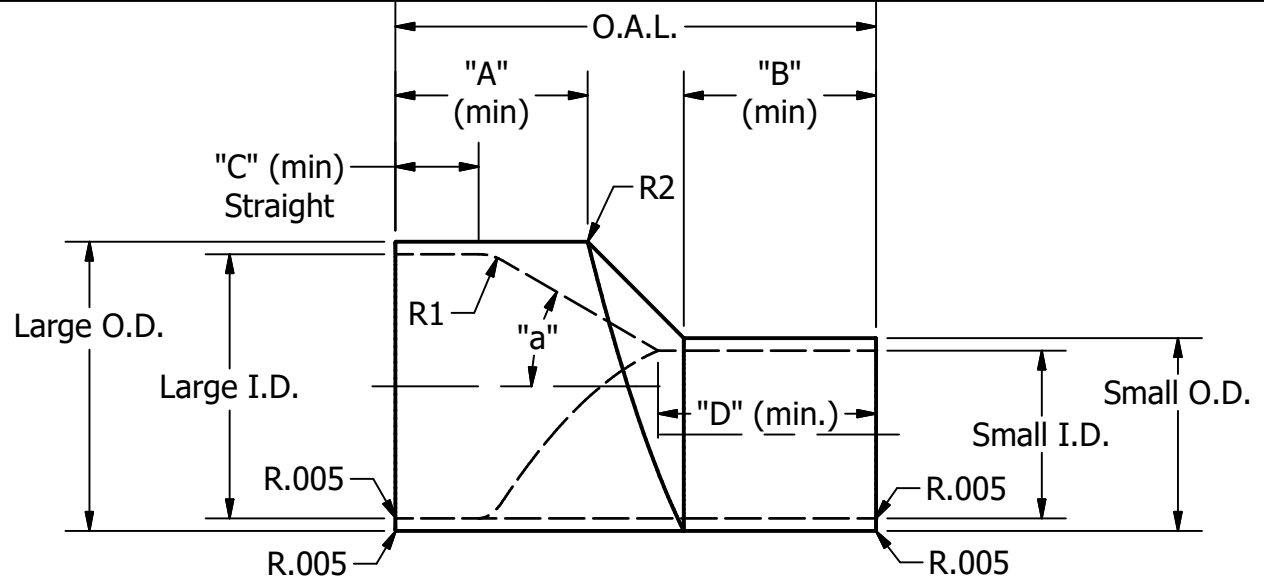
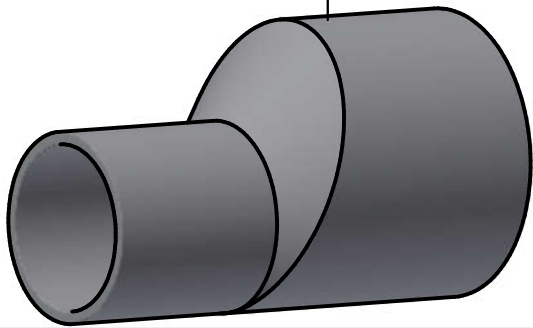
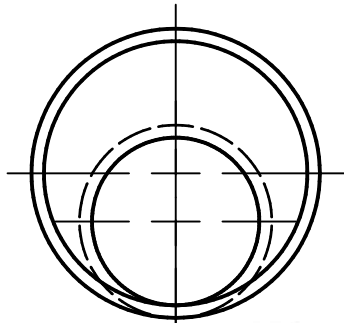


Part No.	Large O.D.	Large I.D.	Small O.D.	Small I.D.	"A"	"B"	"C"	"D"	"R1" min	"R2" min	"a" max.	OAL
S32S-.50X.25	.500	.370	.250	.180	1.000	.750	.375	.875	.250	.031	30	1.875
S32S-.75X.50	.750	.620	.500	.370	1.000	1.00	.375	1.125	.250	.031	30	2.125
S32S-1X.50	1.000	.870	.500	.370	1.000	1.000	.375	1.125	.250	.031	30	2.500
S32S-1X.75	1.000	.870	.750	.620	1.000	1.000	.375	1.125	.250	.031	30	2.125
S32S-15X1	1.500	1.370	1.000	.870	1.000	1.000	.375	1.125	.250	.031	30	2.500
S32S-2X15	2.000	1.870	1.500	1.370	1.000	1.000	.375	1.125	.250	.031	30	2.500
S32S-25X15	2.500	2.370	1.500	1.370	1.000	1.000	.375	1.125	.250	.031	30	3.375
S32S-25X2	2.500	2.370	2.000	1.870	1.000	1.000	.375	1.125	.250	.031	30	2.500



NOTES:

- Dimensions "A" and "C" are straight tangent lengths (before radii)
- Part must conform to the latest ASME BPE Specifications for Dimensions and Material

REVISION HISTORY

REV	DESCRIPTION	DATE
1	Removed Large Offset Sizes to Individual Prints	9/26/16
2	Added .50x.25 Size	5/28/19
3	Added 1x.5, 3x1.5, 4x2&6x4	9/9/2024

TOLERANCES

DECIMALS:
 .XX ±.015
 .XXX ±.005
 .XXXX ±.0005
 ANGLES: 1°

DRAWN
 R Canell
 9/20/2012

ALL EDGES AND
 FILLETS .015 R
 UNLESS OTHERWISE
 SPECIFIED

Steel & O'Brien Mfg. Inc.

TITLE
 S32S AUTOMATIC TUBE WELD SHORT ECCENTRIC
 REDUCER

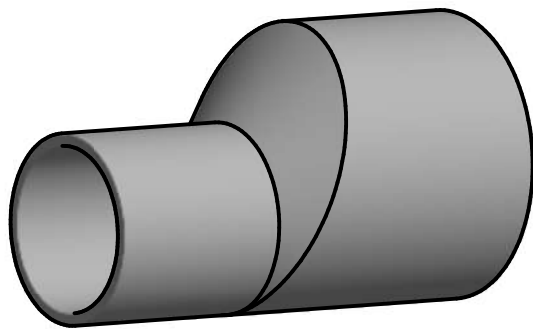
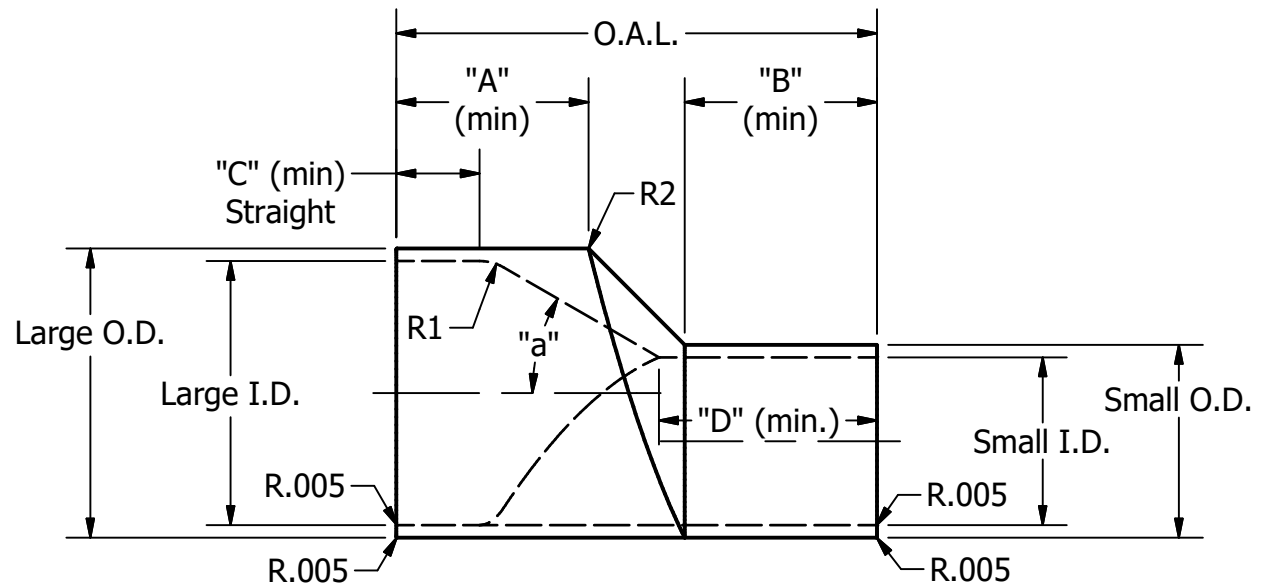
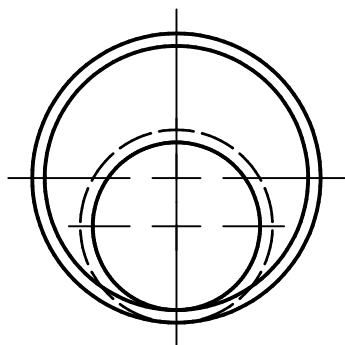
DWG NO: **S32S**

REV
 3

SCALE: 1 : 1

SHEET 1 OF 2

Part No.	Large O.D.	Large I.D.	Small O.D.	Small I.D.	"A"	"B"	"C"	"D"	"R1" min	"R2" min	Angle	OAL
S32S-3X1.5	3.000	2.870	1.500	1.370	1.625	1.500	.442	1.625	.250	.031	30	4.25
S32S-3X2	3.000	2.870	2.000	1.870	1.500	1.000	.375	1.125	.250	.031	30	3.375
S32S-3X25	3.000	2.870	2.500	2.370	1.500	1.000	.375	1.125	.250	.031	30	2.625
S32S-4X2	4.000	3.834	2.000	1.870	1.625	1.100	.442	1.625	.250	.031	30	5.125
S32S-4X25	4.000	3.834	2.500	2.370	1.500	1.000	.375	1.125	.250	.031	30	4.250
S32S-4X3	4.000	3.834	3.000	2.870	1.500	1.500	.375	1.625	.250	.031	30	3.875
S32S-6X4	6.000	5.782	4.000	3.834	2.000	1.625	1.625	2.000	.250	.031	44	5.625



NOTES:

- 1.) Dimensions "A" and "C" are straight tangent lengths (before radii)
- 2.) Part must conform to the latest ASME BPE Specifications for Dimensions and Material

TOLERANCES	DRAWN R Canell	Steel & O'Brien Mfg. Inc.	
	9/20/2012		
DECIMALS: .XX ±.015 .XXX ±.005 .XXXX ±.0005 ANGLES: 1°	ALL EDGES AND FILLETS .015 R UNLESS OTHERWISE SPECIFIED	TITLE S32S AUTOMATIC TUBE WELD SHORT ECCENTRIC REDUCER	
		DWG NO: S32S	REV 3
		SCALE: 1 : 1	SHEET 2 OF 2