

BUTTERFLY VALVES

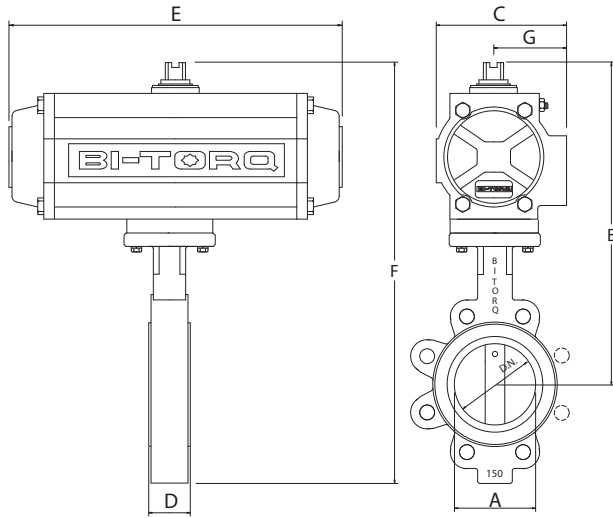
BY SERIES



Lug style with pneumatic actuator and accessories

AUTOMATED CAST IRON

- Wafer and lug style cast iron BFVS - 2" through 12"
- SS stem and disc as standard
- EPDM, BUNA-N, VITON[®] or PTFE[®] seats
- Direct mount for low profile, cost-efficient operation
- Pneumatic, electric and gear operators

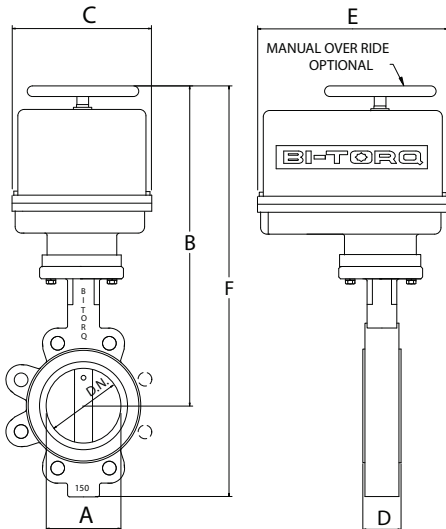


ALL STANDARD PNEUMATIC ACTUATORS SIZED FOR 80 PSI SUPPLY; PLEASE CONSULT OUR SALES STAFF FOR OTHER COMBINATIONS.

PNEUMATIC ACTUATORS

	A	B	C	D	E	F	G	ACTUATOR
DOUBLE ACTING	2"	10.30	3.17	1.69	6.38	13.45	1.77	PN-63DA
	2-1/2"	10.85	3.17	1.81	6.38	14.35	1.77	PN-63DA
	3"	11.09	3.17	1.81	6.38	14.83	1.77	PN-63DA
	4"	12.46	3.17	2.05	6.38	16.95	1.77	PN-63DA
	5"	14.08	4.17	2.20	9.35	19.08	2.30	PN-85DA
	6"	15.10	4.85	2.69	10.69	20.57	2.30	PN-100DA
	8"	17.62	5.39	2.87	12.91	24.51	2.68	PN-115DA
	10"	20.49	6.45	3.44	16.85	28.48	3.15	PN-145DA
12"	22.89	7.35	3.07	16.93	32.42	3.94	PN-161DA	
SPRING RETURN	2"	10.95	3.72	1.69	8.15	14.10	2.07	PN-75SR
	2-1/2"	11.50	3.72	1.81	8.15	15.00	2.07	PN-75SR
	3"	12.19	4.17	1.81	9.35	15.93	2.30	PN-85SR
	4"	14.07	4.85	2.05	10.69	18.56	2.68	PN-100SR
	5"	14.59	4.85	2.20	10.69	19.59	2.68	PN-100SR
	6"	17.64	6.45	2.20	16.85	23.11	3.44	PN-145SR
	8"	19.61	7.35	2.36	16.93	26.50	3.94	PN-161SR
	10"	23.17	8.82	2.68	20.94	31.16	4.41	PN-201SR
12"	29.79	10.48	3.07	26.06	39.32	5.24	PN-241SR*	

*INCLUDES CARBON STEEL MOUNTING KIT



ELECTRIC ACTUATORS

	A	B	C	D	E	F	ACTUATOR
2"	12.22	4.25	1.69	6.88	15.37		BI-200-A-4-P1
2-1/2"	12.77	4.25	1.81	6.88	16.27		BI-200-A-4-P1
3"	13.01	4.25	1.81	6.88	16.75		BI-300-A-4-P1
4"	16.50	7.00	2.05	7.00	20.99		BI-675-A-4-P1
5"	17.02	7.00	2.20	7.00	22.02		BI-1000-A-4-P1*
6"	17.53	7.00	2.20	7.00	23.00		BI-1500-A-4-P1*
8"	22.50	10.00	2.36	10.00	29.39		BI-3800-A-4-P1*
10"	27.13	10.00	2.68	10.00	35.12		BI-3800-A-4-P1**
12"	28.91	11.42	3.07	17.60	38.44		BI-5310-A-4***

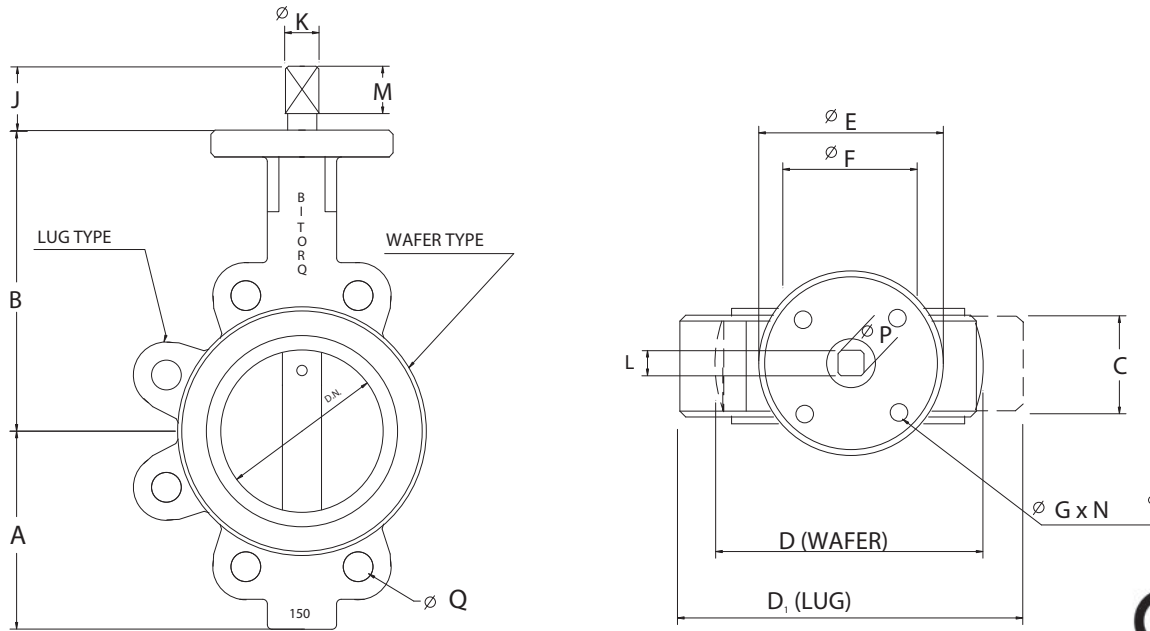
ALL ELECTRIC ACTUATOR DIMENSIONS ARE FOR NEMA 4 ENCLOSURES. FOR NEMA 7 ENCLOSURE DIMENSIONS, PLEASE CONSULT OUR SALES STAFF.

*INCLUDES DECLUTCHABLE MANUAL OVERRIDE

**INCLUDES DECLUTCHABLE MANUAL OVERRIDE AND MOUNTING KIT

*** INCLUDES MANUAL OVERRIDE AND MOUNTING KIT. THIS MODEL IS OUR BH SERIES - SEE SALES FOR LOOK OF ACTUATOR.

DIMENSIONS AND MATERIALS



THE BY SERIES IS DESIGNED TO FIT BETWEEN ANSI CLASS 125# AND 150# FLANGES

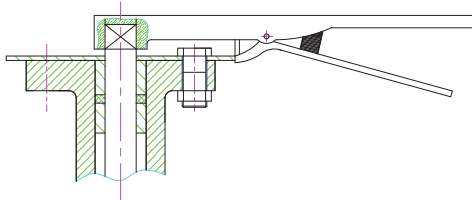


DIMENSIONS

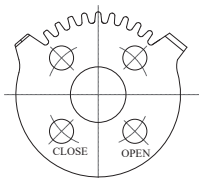
SIZE	ISO	A	B	C	D (WAFER)	D (LUG)	EØ	FØ	G x No.	J	KØ	L	M	Q (LUG ONLY)	WEIGHT (LBS.) LUG	WEIGHT (LBS.) WAFER
2"	F07	3.15	6.34	1.69	4.02	5.98	3.54	2.76	0.354 x 4	1.023	0.551	0.433	0.669	4 x 5/8-11	8.4	5.5
2-1/2"	F07	3.50	6.89	1.81	4.76	6.74	3.54	2.76	0.354 x 4	1.023	0.551	0.433	0.669	4 x 5/8-11	9.2	7.0
3"	F07	3.74	7.13	1.81	5.47	7.87	3.54	2.76	0.354 x 4	1.023	0.551	0.433	0.669	4 x 5/8-11	10.3	7.9
4"	F07	4.49	7.87	2.05	6.30	9.02	3.54	2.76	0.354 x 4	1.181	0.709	0.551	0.826	8 x 5/8-11	15.8	10.8
5"	F07	5.00	8.39	2.20	7.48	10.00	3.54	2.76	0.354 x 4	1.181	0.709	0.551	0.826	8 x 3/4-10	21	15.4
6"	F07	5.47	8.90	2.20	8.46	11.02	3.54	2.76	0.354 x 4	1.299	0.866	0.669	0.945	8 x 3/4-10	23	17.2
8"	F07	6.89	10.24	2.36	10.59	13.50	3.54	2.76	0.472 x 4	1.299	0.866	0.669	0.945	8 x 3/4-10	40	29
10"	F10	7.99	11.50	2.68	13.11	15.98	4.92	4.02	0.472 x 4	1.850	1.102	0.866	0.945	12 x 7/8-9	59	42.2
12"	F10	9.53	13.27	3.07	15.08	19.02	4.92	4.02	0.472 x 4	1.850	1.102	0.866	0.945	12 x 7/8-9	88	71.5

OPTIONAL BUTTERFLY VALVES AVAILABLE THROUGH 24". HIGH PERFORMANCE, ALL STAINLESS AND SANITARY VALVES ALSO AVAILABLE.

10 POSITION HANDLE



WITH 10 POSITION PLATE



ALL MANUAL VALVES INCLUDE A 10-POSITION HANDLE.
CAST IRON GEAR OPERATORS ARE ALSO AVAILABLE.

BILL OF MATERIALS

DESCRIPTION	QTY	MATERIAL
BODY	1	CAST IRON
BOTTOM BUSHING	1	BRONZE
SHAFT	1	316 SS
SEAT	1	EPDM, BUNA, VITON, PTFE
DISC	1	316 SS
TAPER PINS	1-2	316 SS
NAME PLATE	1	316 SS
RIVETS	2	316 SS
TOP BUSHING	1	BRONZE
O-RING	1	EPDM

SPECIFICATIONS

DESIGN AND STANDARDS:
MSS-SP67, API 609
FLANGE ENDS ANSI B16.1

WORKING PRESSURE:
225 PSI TO 8"
150 PSI 10"-12"

SHELL TEST:
350 PSI

SEAL TEST:
250 PSI

WORKING TEMPERATURE:
EPDM: -30° F TO +275° F
BUNA-N: +10° F TO +180° F
VITON®: 0° F TO 350° F
PTFE: -20° F TO +250° F